

Falabella Construction Group, LLC

Energy Management / Systems / Controls / Metering

Custom Designed and Built Electrical Panels for Plant and Equipment Control, Systems Integration and Metering

Attention Engineers, General Contractors and MEP Contractors:

Does the scope for your new job include non standard controls that your equipment supplier can't provide or a custom designed controls package that your controls contractor excluded from their proposal? Perhaps you got a last minute change order to quickly provide a one-off custom control panel that the engineer of record inadvertently omitted from the design. These are common occurrences that tend to push back Start Up and eventually Beneficial Use of important pieces of equipment.

Providing last minute custom built controls can take quite some time, especially if your schedule leaves little time to find the right person. The process involves conceiving a design, generating shop drawings to communicate that design for EOR approval as well as providing cut sheets for the physical devices. Once approved, the devices and material have to be procured, then the panel(s) built, programmed, tested and delivered with As Built drawings and wiring diagrams for installation.

This process could easily take 6 months and involve multiple vendors, many of whom couldn't care less about your schedule but are happy to add their 10% overhead and 10% profit to the cost as they pass it through. One way to minimize the cost and lead time is to remove all of the pass-through vendors and call me direct. I have 34 years of Project Management experience in the NYC controls / mechanical construction industry and just as much hands on experience. I have been the controls "go to guy" for many of the firms I've worked for, designing and building custom, one-off controls in-house and saving significant time and money for the companies who have employed me. I could do the same for you. As an additional benefit, my Project Management experience allows me to fully understand the urgency you may be experiencing and the consequences involved with potential delays - even if the delay is not your fault, and as a Certified Energy Manager for 20 years, I am familiar with reduced energy equipment and the sequences of operations designed to maximize efficient use and save energy costs.

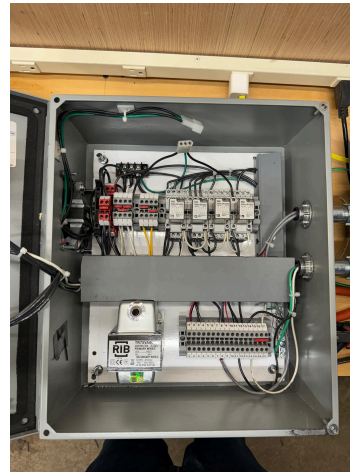
A typical scope would include:

- Review design and generate RFIs if necessary
- Produce shop drawings including a panel exterior door layout, a panel interior layout, details of field terminations and ladder logic diagrams for submission to the engineer of record
- Collect and submit all necessary material cut sheets
- Follow up with the EOR for approval
- Procure all approved material
- Assemble all panels as per approved shop drawings
- Test each circuit and produce a report
- Generate As Built drawings and O&M Manuals
- Provide installation, start up and commissioning assistance if required
- Provide client training if required

Typical panel types:



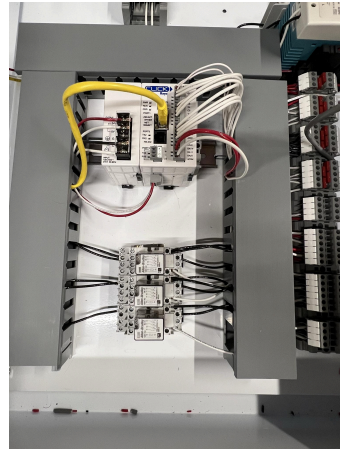
Balance of Plant controls



HVAC Controls



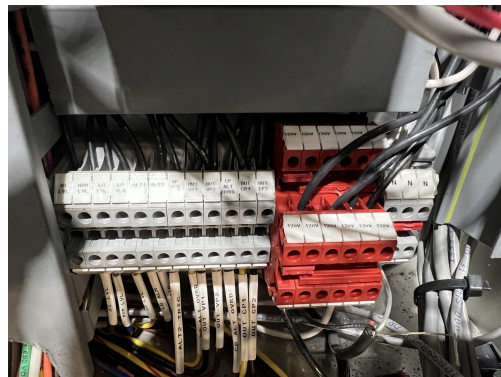
Vacuum pump / Condensate return controls



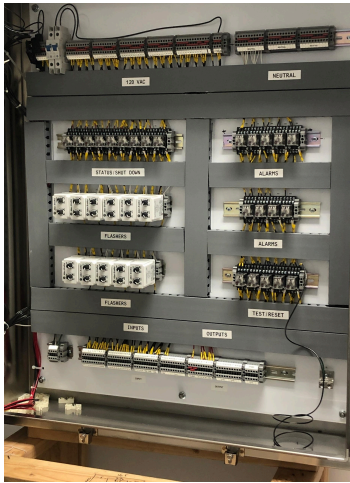
Generator room ventilation controls



Fuel system controls



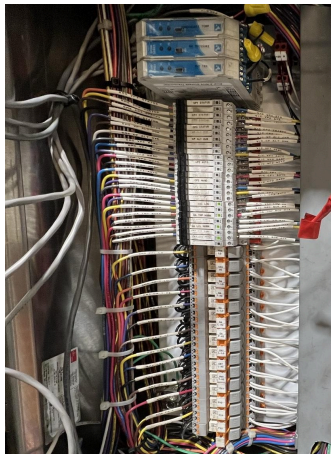
Tank level controls



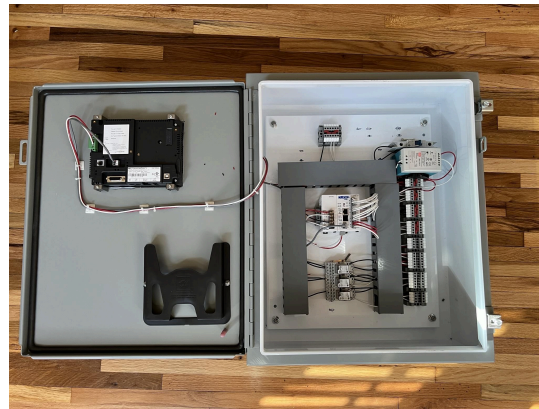
Relay logic based controls



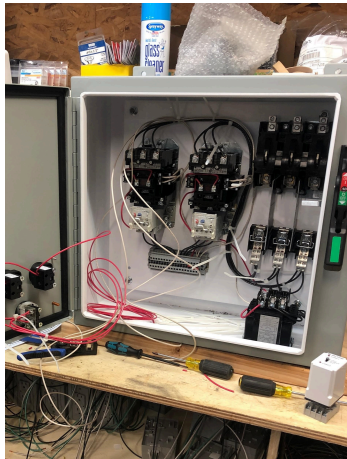
Remote alarm annunciator panels



BMS interface panels



PLC / HMI based controls



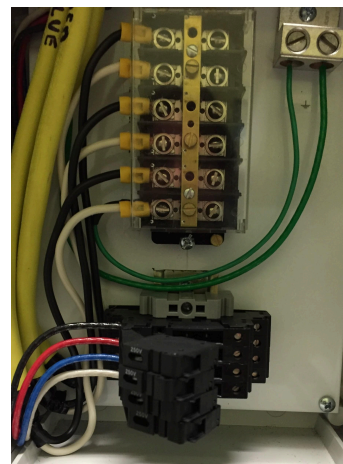
Pump / fan starter controls





Low voltage Flow Meter Power Distribution and Data Acquisition Panels - for sub-metering



Electric power meter interface...



with fused voltage inputs and CT shorting blocks

 A circular Schneider Electric Vison meter with a green LCD screen and various ports. The meter is labeled with 'Schneider Electric', 'Vison', and 'Schneider Electric' along with a barcode and the number '10436309'. It is connected to several colored wires.	 A custom electrical control panel with a stainless steel door. The interior is filled with various electrical components, including a terminal block, a fuse block, and a control unit. The panel is mounted on a wooden pallet.
<p>Advanced Metering Infrastructure</p>	<p>Custom / One Off Controls</p>

As well as:

- VFD / VSD controls
- Temperature / Humidity controls
- Break Glass / Safety Shutdown Circuitry
- Remote temporary power and lighting panels

For a proposal, please pass along your requirements, I could be contacted by email at falabellaconstructiongroup@gmail.com or by phone and text at 347.699.9848.

I look forward to hearing from you soon.

Frank Falabella

Falabella Construction Group, LLC
M: 347.699.9848
E: falabellaconstructiongroup@gmail.com